

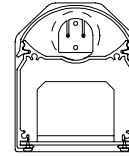


# LIGHTING & ELECTRONICS, INC.

Market Street Industrial Park  
Wappingers Falls, NY 12590  
845-297-1244 FAX 845-297-9270  
info@le-us.com http://www.le-us.com

**8010**  
**Blackbird™**  
**Blacklight**  
**40w**

**Height** (Top to Bottom) 5"  
**Width** (Side to Side) 3-3/4"  
**Length** (End to End) 50-3/8"  
**Weight** 12 lbs



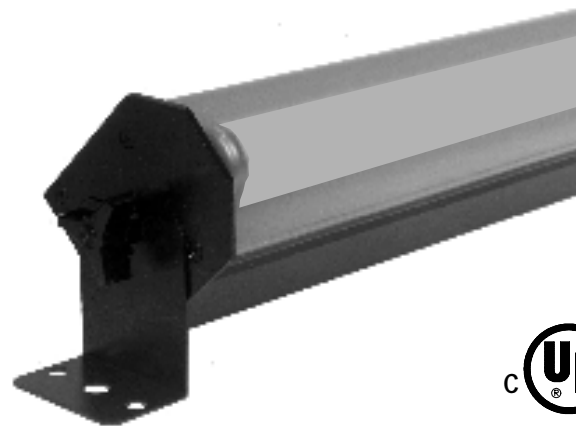
## PERFORMANCE:

**SPREAD**  
**Horizontal** **Angle**  
Field (Cut-off) 178°  
**Vertical**  
Field (Cut-off) 190°

**RANGE**  
Minimum 1 ft  
Maximum 25 ft

### LAMP DATA

Type	Wavelength	Class	Hrs
F40BLB	350-400nm	UV-A	20,000



## SPECIFICATION:

The fixture shall be a UL/C-UL Listed 40 watt max fluorescent striplight operating within an ultraviolet range that is safe for human exposure, i.e., the UV-A range. The unit shall be equipped with an integral, 120V Class P ballast containing no PCB's. The ballast shall not require the use of circuit interrupting lampholders and shall have a power factor greater than 0.85. The housing shall be of extruded aluminum with an aluminum ballast plate and end caps. The housing shall be designed to provide an integral reflecting surface optimizing output, and shall accept snap-on lamp shields. The lamp shields shall provide protection to the lamp for trouping purposes, and shall be removable without the use of tools when the fixture is ready for use. The unit shall be able to be supported using either standard trunnions or L brackets.

Relamping shall be accomplished by snapping the lamp out of the lamp holders; no tools shall be required. Relamping shall not disturb the prefocused lamp-reflector alignment.

The instrument shall be supplied with two 16 gauge steel single mount trunnions for overhead or floor use, a pair of plastic lamp shields, and a six foot power supply cord rated for hard usage with an integral plug (NEMA 5-15). A low profile carry handle, cord retainers, and a female receptacle (NEMA 5-15) shall also be provided for feed-through capability.

All painted surfaces shall be baked enamel.