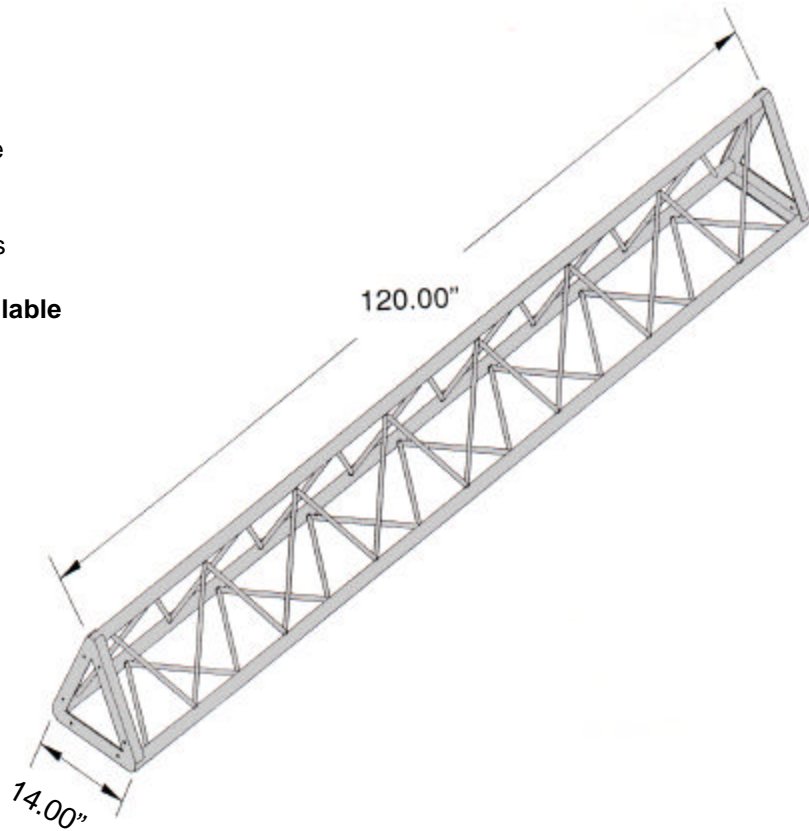




# TR-14 TRIANGLE TRUSSING

## FEATURES:

- 14" OD Triangle Style
- 1-3/8" OD 6061-T6 Aluminum Tube
- 1/2" Solid Aluminum Rod Bracing
- .125" Wall Thickness
- 1-1/2" x 3/16" Aluminum End Plates
- Highly Polished Aluminum Tubing
- **Custom Lengths & Corners Available**



WEIGHT LOADING INFORMATION		
Length	Uniform Distribution	Center Point Load
10 ft 1 Section	1600 lbs	900 lbs
20 ft 2 Sections	1300 lbs	700 lbs
30 ft 3 Sections	735 lbs	460 lbs
40 ft 4 Sections	500 lbs	260 lbs

*\* Weight Load Certified By Structural Engineering Firm*

ORDERING INFORMATION & SPECIFICATIONS		
Part Number	Dimensions	Weight
110	14" OD x 10 ft	33 lbs
121	14" OD x 8 ft	22 lbs
111	14" OD x 5 ft	17 lbs
120	14" OD x 2.5 ft	8 lbs

## STANDARD CORNER ADAPTERS

- 90 Degree Horizontal
- 90 Degree Vertical
- 45 Degree Corner
- "T" 3-Way Adapter
- 4-Way Cross Adapter
- Hinged Corner