

How to use the Hog Playback wing with HOGpc

1. Set up hog pc with USB dongle plugged in as normal
2. Plug HOG Wing VGA into VGA on back of HOGpc
3. Plug HOG wing USB into laptop USB
4. Turn on laptop.

Test that the touch screen is working by moving a finger around the HOG wing screen. If the mouse pointer moves with your finger on the WING screen you're all set. You can then open HOGpc and move either window to the HOG wing for use with the touch screen.

If the mouse pointer moves on the LAPTOP screen when you touch the HOG wing screen, you need to recalibrate the touchscreen using the ELO driver software.

1. Goto the start menu and search for ELO. The ELO driver software will appear as the search result.
2. Open the ELO driver software.
3. Click on the calibrate button. The screen on the laptop will display the calibration window.
4. PRESS ESCAPE. This will move the calibration window to the HOG wing screen.
5. Follow the prompts to calibrate.

This should allow you to use the HOG wing screen as a touch screen while programming.

To create a manageable working environment.

1. Drag the left window (IMAGE 1) to the HOG wing screen
2. Right click on the blue programmer window (IMAGE 2) and under WORKSPACES click PROGRAMMER. This will "hide" the playback faders and allow you to move the programmer to allow for more space for the PRIMARY SCREEN (IMAGE 3). The HOG wing playbacks are identical to the playbacks on the screen.

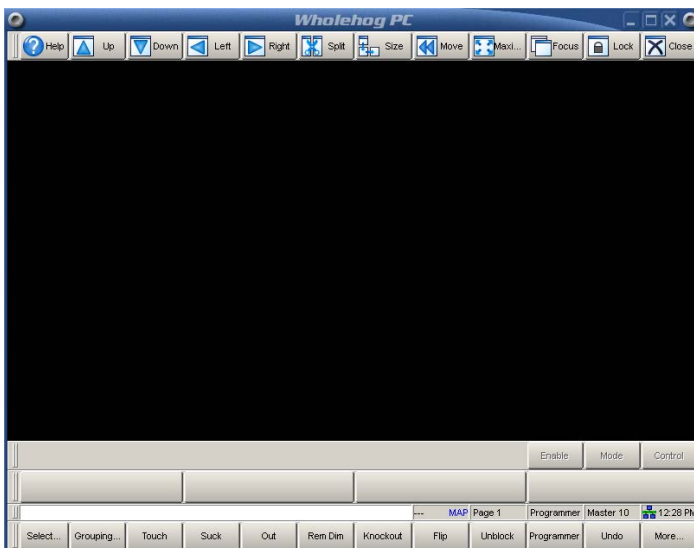


IMAGE 1 - HOG Secondary window on HOG wing.



IMAGE 2 – HOG Programmer without playbacks.

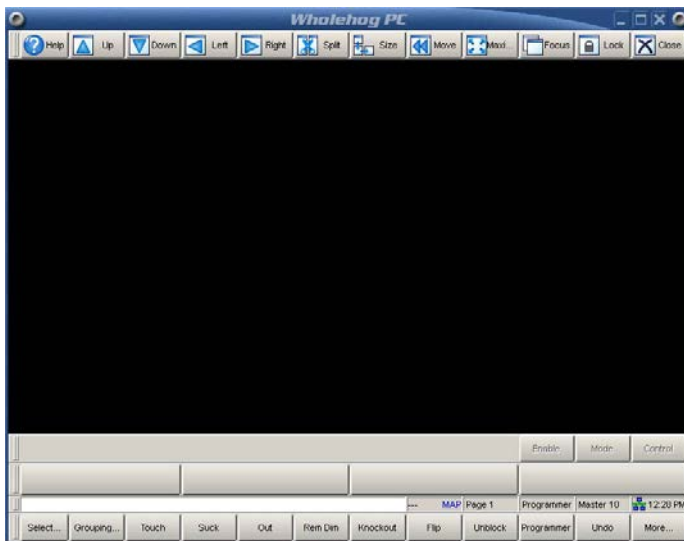


IMAGE 3 – HOG PRIMARY window on Laptop

To use the keyboard while programming you need to Press the FUNCTION key and PAUSE. Once done the 5th cell from the bottom right on the PRIMARY screen will change from “Abc” to “MAP”. The cheat sheet for KEYBOARD shortcuts is on the next page.

Function	Keystroke	Function	Keystroke
Toggle Shortcuts	Pause or Break	Main GO	} or] or Space
Pig	CTRL	Main Pause	{ or [
Open	ESC or O	Skip Fwd	K
Set	NumLock or Insert	Skip Back	J
Intensity	F11	Goto	G
Position	F2	Release	Z
Colour	F3	Pig + Release	ALT + Z
Beam	F4	Assert	A
Effects	F7	Next Page	: or ;
Macro	F5	@	' or @
Group	F1	Full	~ or #
Fixture	F12	Thru	*, > or X
Scene	F9	Minus (-)	- or _
Cue	F10	Plus (+)	= or +
List	F8	slash (/)	/ or ?
Page	F6	Point (.)	. or >
Record	R	Choose Master 1-10	ALT + 1 - 0
Merge	E	GO Master 1-10	TAB + 1 - 0
Move	M	Pause Master 1-10	Backspace + 1-0
Copy	P	Undo	CTRL + Z
Delete	D or Delete	Redo	CTRL + Y
Update	U	Visual Cut	CTRL + X
Live	V	Visual Copy	CTRL + C
Time	T	Visual Paste	CTRL + V
Setup	S	Visual Select Range	CTRL + cursors
Control	L	Backspace	backspace
Fan	F	Enter	Enter
Highlight	H	GM	\ and or
Blind	B	Central Choose	ALT + -
Clear	C	Bottom Right toolbar	TAB + F1 - F12
Next	N	Top Left toolbar	Shift + F1 - F12
Back	Y	Top Right toolbar	ALT + F1 - F12